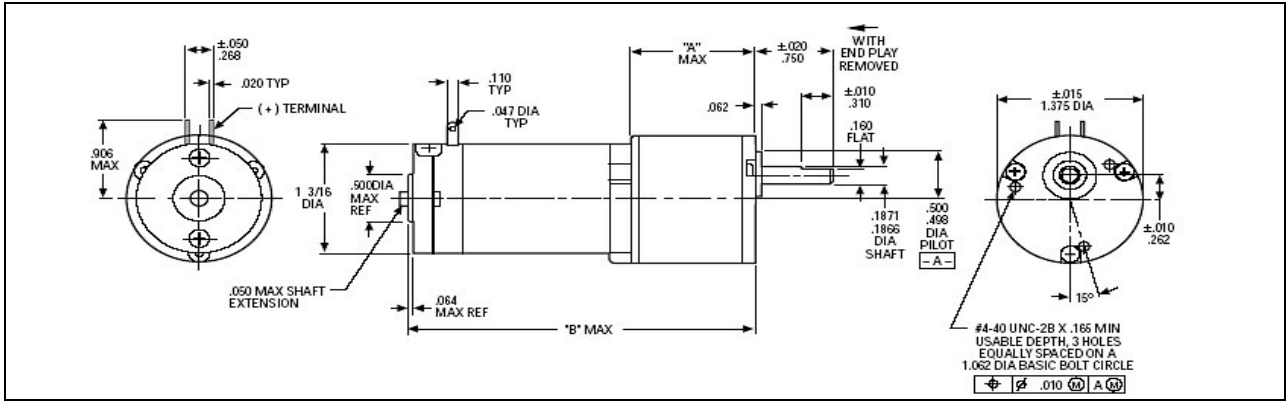




STANDARD PRODUCT

Date: 08/08/2008 **Prepared for:** Production
Planetary Gearmotor **Model Number:** MMP G13-12V GS-922



DC MOTOR PERFORMANCE PARAMETERS	Value	Units	Tolerance
RATED VOLTAGE D.C.	12.0	VOLTS	----
RATED CONTINUOUS CURRENT	0.80	AMPERE	----
RATED CONTINUOUS TORQUE	1.5	OZ - IN	----
RATED SPEED	5200	RPM	+/- 15%
RATED CONTINUOUS POWER OUT	6	WATTS	+/- 15%
NO LOAD SPEED	6000	RPM	MAX
NO LOAD CURRENT	0.20	AMPS	MAX
BACK EMF CONSTANT (Ke)	2.0	V/KRPM	+/- 10%
TORQUE CONSTANT (Kt)	2.7	OZ - IN / A	+/- 10%
DC ARMATURE RESISTANCE AT 1.5 AMPS	7.3	OHMS	+/- 15%
ARMATURE TEMP	130	DEGR. C	MAX
PEAK TORQUE (motor-only)	34	OZ - IN	----
PLANETARY GEARMOTOR OUPUT PARAMETERS:			
PLANETARY GEARHEAD RATIO	922:1		
GEARMOTOR RATED CONTINUOUS TORQUE	100	OZ-IN.	MAX
GEARMOTOR RATED PEAK TORQUE	100++	OZ-IN.	MAX
GEARHEAD SHAFT OUTPUT SPEED (@ F.L.)	5.6	RPM	----
GEARMOTOR TOTAL LENGTH ("B" DIMENSION)	3.02	INCH	MAX
GEARHEAD EFFICIENCY	61%		
GEARMOTOR TOTAL WEIGHT	10	OUNCES	MAX

++ All Peak Torque Values are dependent upon duty. Kindly consult our Sales Offices for further details

MIDWEST MOTION PRODUCTS
Design, Manufacturing & Distribution – Motion Control Equipment
 10761 Ahern Avenue S. E. Watertown, MN. 55388
 Phone: 952-955-2626 Fax: 480-247-4096
 www.midwestmotion.com email: randy@midwestmotion.com